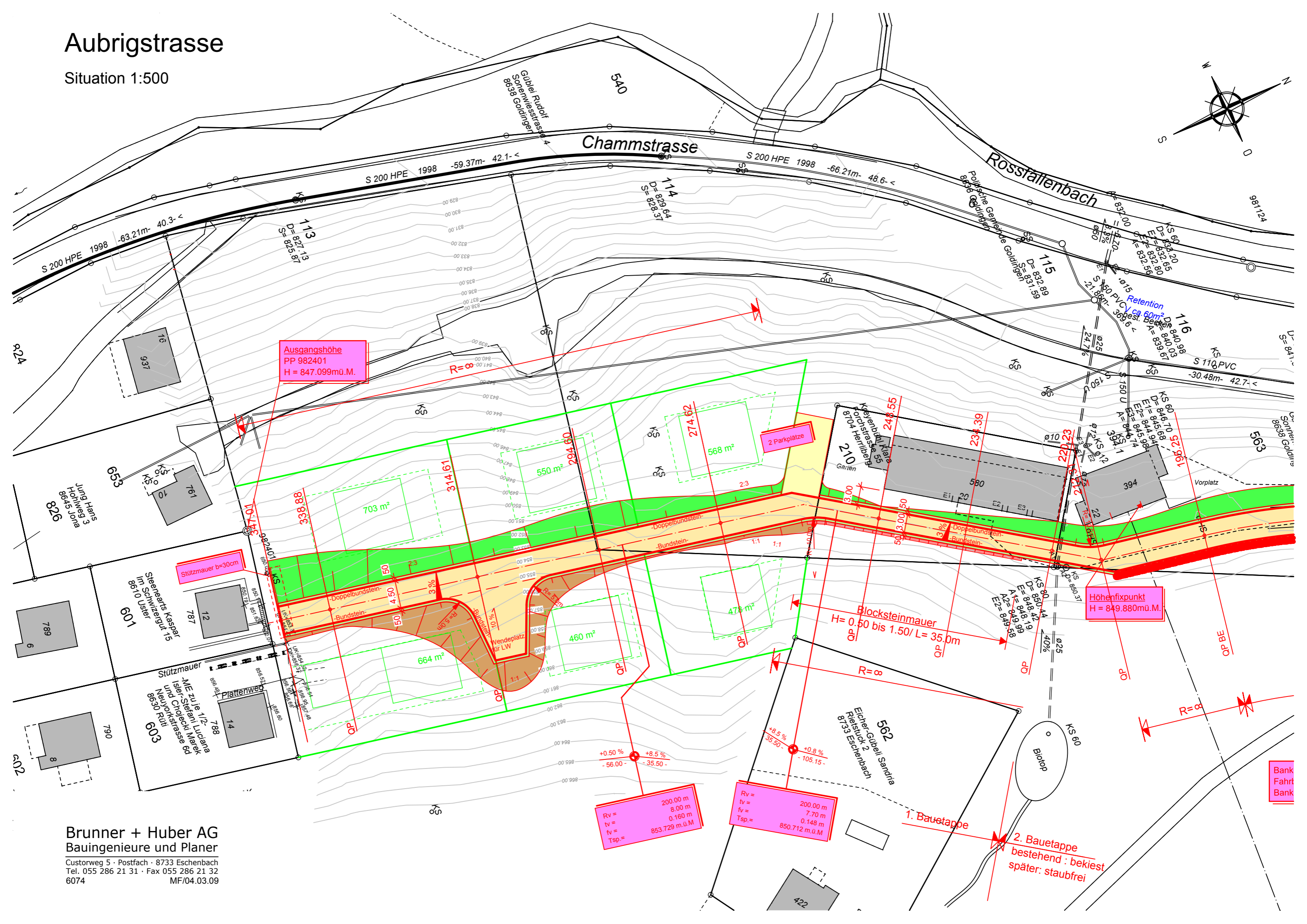
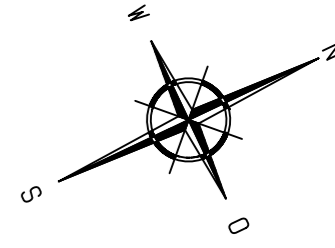


Aubrigstrasse

Situation 1:500



Ausgangshöhe
PP 982401
H = 847.099mü.M.

Höhenfixpunkt
H = 849.880mü.M.

Rv = 200.00 m
lv = 8.00 m
fv = 0.160 m
Tsp = 853.729 m.ü.M

Rv = 200.00 m
lv = 7.70 m
fv = 0.148 m
Tsp = 850.712 m.ü.M

Blocksteinmauer
H = 0.50 bis 1.50/ L = 35.0m

1. Baustappe
2. Baustappe
bestehend : bekiest
später: staubfrei